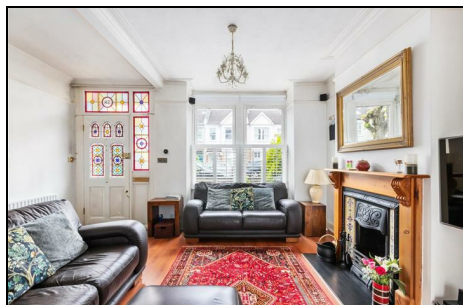


## Prince Georges Avenue Raynes Park, SW20 8BH

£725,000 Freehold



This charming (922 sqft) TWO DOUBLE BEDROOM Edwardian "Apostle" House (circa 1905) has a superb open plan kitchen/dining/reception room and a spacious conservatory. Located on a desirable tree lined Road only 0.2 Miles to Raynes Park Station and High Street. An excellent first/second time purchase or downsize move. There is also a downstairs w.c, a modern family bathroom and a low maintenance rear garden. Excellent potential to further extend s.t.p.p.



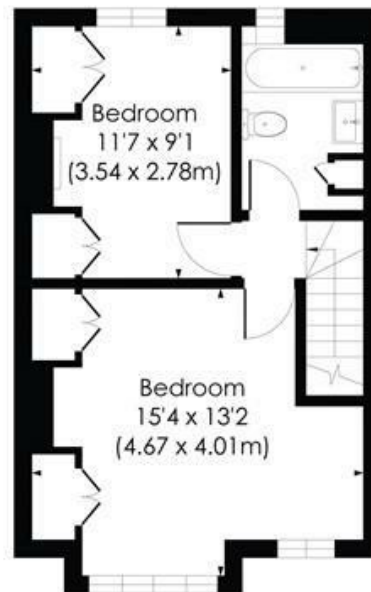
## PRINCE GEORGE'S AVENUE, SW20

Approx. Gross Internal Floor Area

922 Sq. ft/85.61 Sq. m

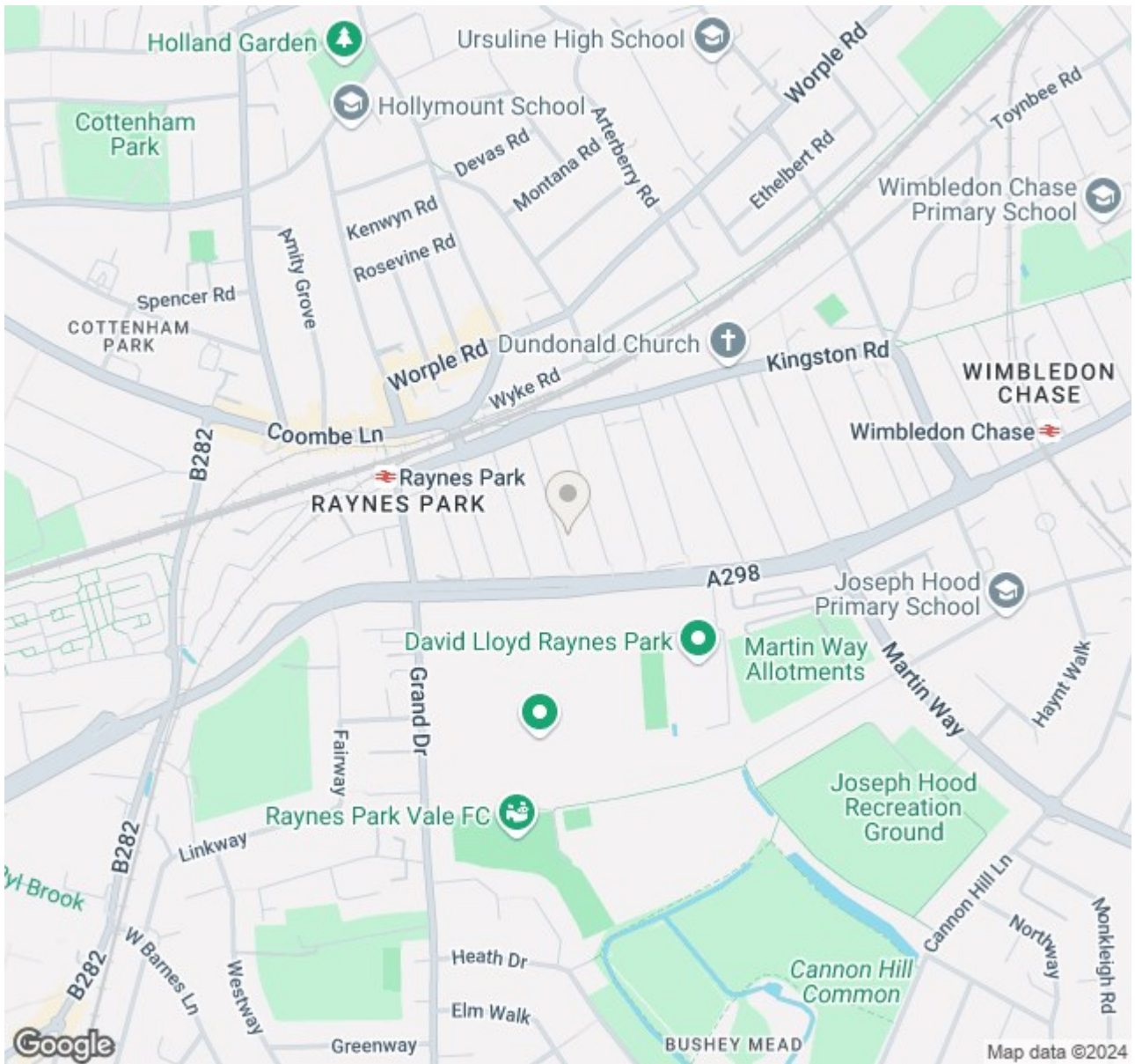


GROUND FLOOR

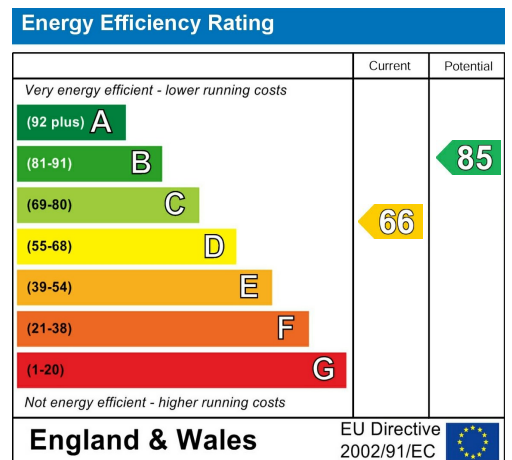


FIRST FLOOR

© Pixangle Property Marketing Ltd. info@pixangle.com Tel: 0208 870 2118



- Two Double Bedroom Edwardian "Apostle" House Circa 1905
- 0.2 Miles to Raynes Park Station and High Street
- Lovely Open Plan Kitchen/Dining/Reception Room
- Conservatory Rear Extension and Downstairs W.C
- Modern Family Bathroom
- Potential to Extend STPP
- Low Maintenance Rear Garden
- Excellent First/Second Time Purchase or Downsize Move
- Council Tax Band - D
- EPC Rating - D



For Free Mortgage Quote and Best Mortgage Rates, call Ellisons Mortgage Advisor on 0208 944 9595



Although these particulars are believed to be correct, their accuracy is not guaranteed and they do not form part of any contract.

Celebrating 30 years of successful Sales and Lettings in Merton

